



**Lake Family Resource Center**

# **Early Head Start 2012-2013 Annual Report**

**Lake Family Resource Center  
5350 Main Street  
Kelseyville, CA 95451  
707.279.0563**

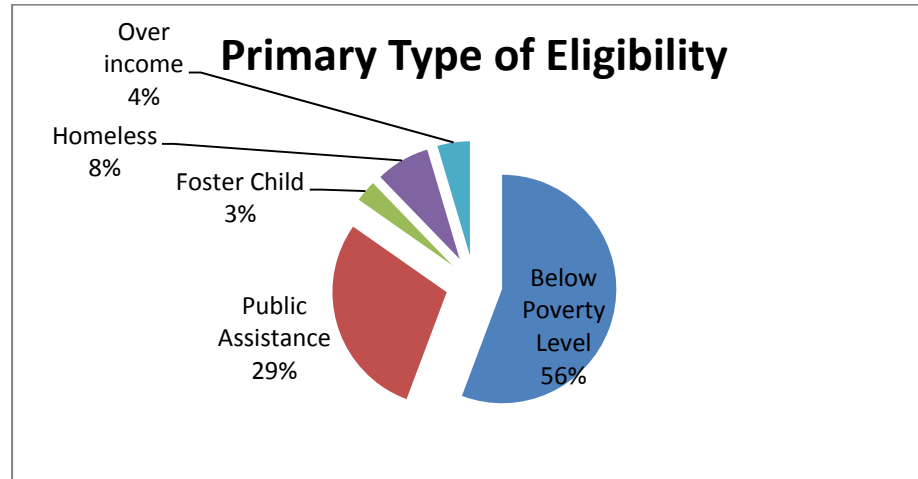
# Lake Family Resource Center

*Strengthening Our Community  
One Family at a Time*

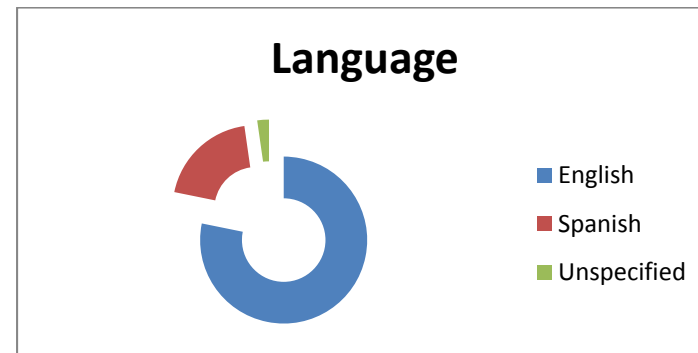
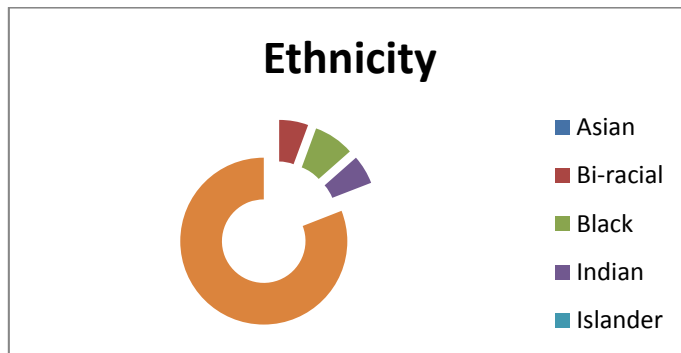
With the passage of the Head Start Reauthorization Act of 2007, each Head Start Agency shall make available to the public a report published at least once each fiscal year that discloses information from the most recently concluded fiscal year. The information required in the annual report is contained in the following pages.

- Our program provides services to pregnant women and families with children zero to three who are at or below the federal poverty guidelines living in Lake County.
- Are funded enrollment is 74 slots with 52 being served in our Home Base option which encompasses our entire County and 22 in our Child Development Center that is located in Lakeport.
- Families qualify for our program by having income below the federal poverty line, are a recipient of public assistance, have a foster child in their care and/or are homeless.
- Some enrollees may exceed the allowed over income enrollment with family incomes ranging between the 100% and 130% of the federal poverty line only when income eligible participants are exhausted.
- Our enrollment year begins May 1<sup>st</sup> and ends on April 30<sup>th</sup>.
- Our cumulative enrollment for the 2012-2013 program year was 133 with 14 participants being pregnant women.

The graph below indicates our enrollment by Eligibility.



- Of the 133 participants, 43 were of Hispanic or Latino origin and 90 identified themselves as Non-Hispanic or Non-Latino origin.
- The graph below indicates the Race and Language of our participants.



## **Early Head Start Services and Parent Involvement Opportunities include:**

**Child Development Education  
Health Education  
Mental Health Education  
Disabilities Education  
Dental Education**

**Nutrition Education  
Prenatal Education  
School-Readiness Education  
Resources and Referrals  
Linkages to Community**

**Home Visiting  
Parent Meetings  
Family Socializations  
Family Support  
Transportation**

**Lake Family Resource Center houses multiple programs that are integrated to provide necessary support to many families struggling with challenging issues. These include a Domestic Violence Prevention, Counseling and Shelter, Rape Crisis Center, Child Abuse Prevention, Child Abuse Treatment Program, Differential Response, Teen Parenting, Early Head Start, Nurturing Parenting Classes, Tobacco Education, Health Insurance Application Assistance, Adolescent Life Skills and Pregnancy Prevention and Mental Health Services. In addition, the agency has strong linkages established with programs such as Easter Seals, Early Start, Migrant and Tribal Programs to ensure our participants can access their resources.**

**Lake Family Resource Center believes that parents are their children's first and primary teachers as well as their lifelong educators so our programs partner with parents to provide the richest learning and developing environment possible for young children. We work together to provide fun and enriching activities to support children's physical, mental, emotional and social development through both individual and group learning experiences. Our Early Head Start program promotes healthy family functioning and provides individualized support. We encourage parent involvement throughout our program with a variety of opportunities including the Parent Policy Council that partners with the agency's Board of Directors to establish program policies and guidelines.**

Information from our 2012-2013 Program Year is listed below.

<b>Health Insurance for Children</b>	<b>At Enrollment</b>	<b>Total Number</b>	<b>% at End of Year</b>
With no insurance at end of program year	117	118	99.2%

<b>Health Insurance for Pregnant Women</b>	<b>At Enrollment</b>	<b>Total Number</b>
With no insurance at end of program year	13	14

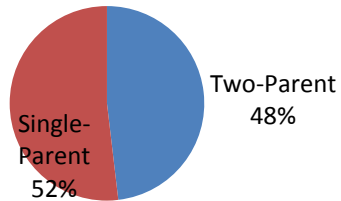
<b>Medical Homes</b>	<b>At Enrollment</b>	<b>At End Program</b>	<b>% at End Year</b>
Number of Children with ongoing source of health care	95	119	100%

<b>Dental Home</b>	<b>At Enrollment</b>	<b>At End of Program</b>	<b>% at End of Year</b>
Number with Dental home	33	110	92.4%

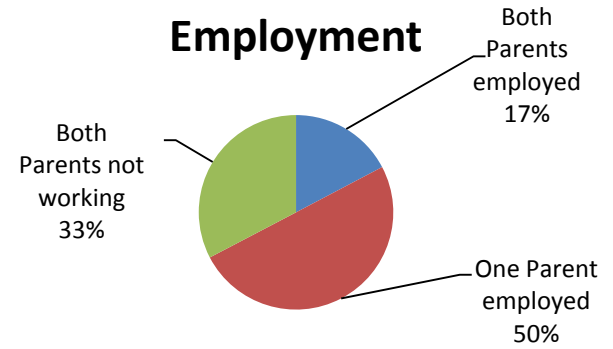
<b>Immunizations</b>	<b>At Enrollment</b>	<b>End of Program</b>	<b>% at End of Year</b>
Number of Children who are up-to-date on their health care	95	114	95.8%

<b>Disabilities</b>	<b>IFSP/IEP</b>	<b>% at End of Year</b>
Number of children with IFSP	12	10.1%

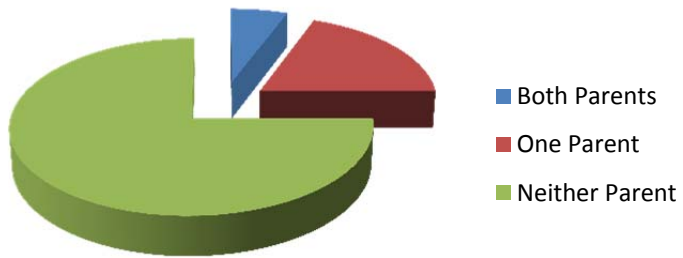
## Families



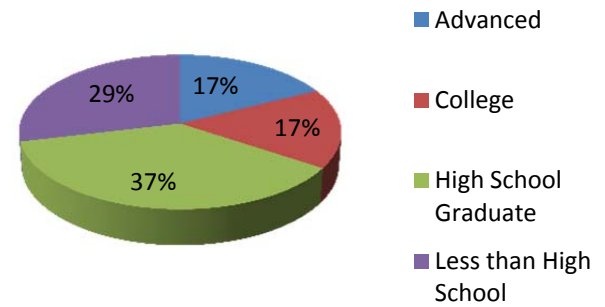
## Employment



## Job Training/School



## Parent Education



## **School-Readiness: Preparation for Pre-School**

Lake Family Resource Center's Early Head Start Programs primary goal is to improve the overall developmental competence of the young children in our program. Thus, LFRC's EHS program has developed school readiness goals that are aligned with the Head Start Child Development and Early Learning Framework and the California Infant/Toddler Foundation.

Data for measuring each child's progress in meeting the School Readiness Goals comes from the following instruments: Creative Curriculum's Infants, Toddlers and Two's Curriculum and Assessment and Creative Curriculum's Learning Games. Additional data is obtained from Child Plus Reports, Parent Reports, Child health and Disability Records.

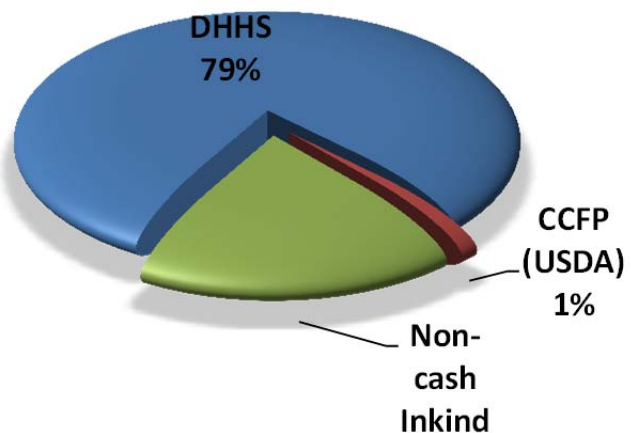
- School Readiness Goals are focused on five domains
  - Cognition and General Knowledge
  - Language and Literacy
  - Approaches to Learning
  - Social and Emotional Development
  - Physical Development and Health

The expectation is that our school readiness goals will improve the overall development competence in the children we serve and the data will indicate that when children leave Early Head Start, they will

- demonstrate improved health and development
- demonstrate improved social behavior and emotional well-being
- demonstrate improved positive approach toward learning
- demonstrate improved language and literacy development
- demonstrate improved cognition and general knowledge

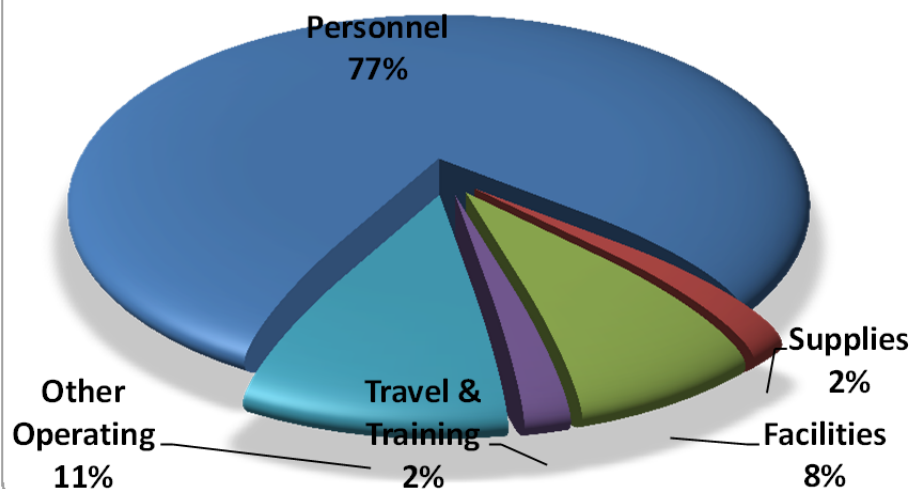
## Lake Family Resource Center - Early Head Start Program Financials

**Annual Funding**  
May 2012 - April 2013



Department of Health & Human Services (DHHS) -  
 Administration for Children & Families= **\$927,301**  
 Child Care Food Program (CCFP)- USDA= **\$15,207**  
 Non-Cash In-Kind = **\$231,825**

**Annual Expenses**  
May 2012 - April 2013



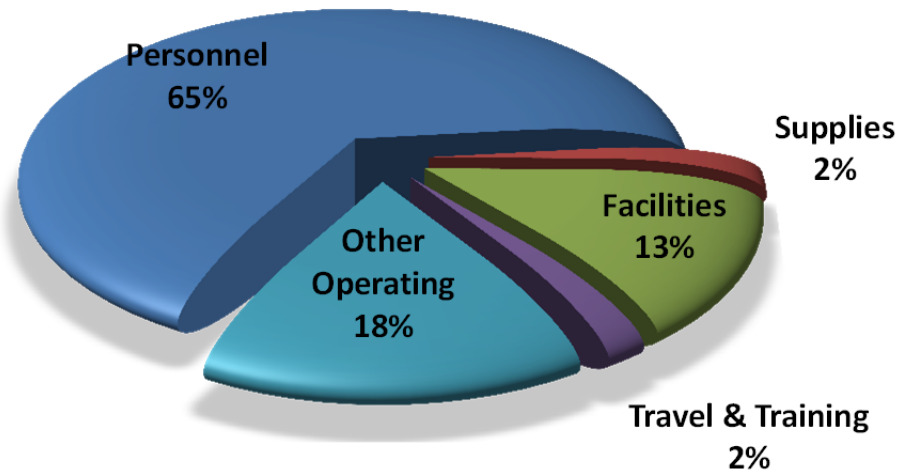
Personnel = **\$893,239**  
 Supplies = **\$21,449**  
 Facilities = **\$92,928**  
 Travel & Training = **\$22,445**  
 Other Operating= **\$129,065**



## Results From Most Recent Financial Audit

We received most recent financial audit from an independent auditor, Robertson and Associates, CPS's, indicating that Lake Family Resource Center's Early Head Start program complied with requirements as described in US Office of Management and Budget Circular A-133 for the period of July 1, 2011 thru June 30, 2012.

### Proposed Annual Budget May 2013 - April 2014



Personnel = \$722,278

Supplies = \$21,202

Facilities = \$148,707

Travel & Training = \$22,617

Other = \$196,646